

CBC Missions Policy

A. Accountability

Consistent with their shepherding and overseeing responsibilities, the Elders of Christ Baptist Church are accountable for all of CBC's missions' partnerships and endeavours.

B. Missions Support Priorities

Our primary focus is church planting which entails evangelism, teaching and training which is focused on making disciples, resulting in the establishment of biblically ordered local churches. Our secondary focus will be supporting and participating in those mission activities and enterprises (evangelism, teaching, training, etc.) which are focused on making disciples, resulting in the strengthening of biblically ordered local churches.

Specifically, this means that CBC's primary objective is to send and support church planters and missionaries who are seeking to carry out CBC's philosophy and priority of missions in our local context, across our borders, or globally.

C. Criteria for Missionary / Church Planter Selection

We see in Acts 13:1-3 that through the church, biblically qualified men were "set apart" to be "sent out" for the proclamation and spread of the Gospel. Given the biblical priorities of the proclamation of the Gospel and the teaching of the Word of God with the goal of establishing local churches, the selection of those with whom we partner with is crucial.

Therefore, we have established the following criteria for the selection of those with whom we have the privilege of sending or partnering with.

- The missionary/church planter and ministry with which he is involved must have a clearly defined objective, consistent with this Philosophy of Missions and CBC's ministry priorities and must affirm the doctrine as expressed in our Statement of Faith.
- Since we believe that those we support must be biblically qualified for leadership in character and doctrine, each missionary must demonstrate godly character, elder qualifications (1 Tim. 3; Titus 1) and competence to fulfil their ministry which has been affirmed by their local church or the elders of CBC.
- Any missionary or mission agency desiring CBC's financial support and/or partnership must be interviewed and approved by the CBC Missions Committee and elders before being considered.

D. Congregational Participation

As missions is the very heart of the church (Matt 28:18-20), we want to pray and work toward seeing this "culture of missions" developed among the whole congregation. This will be achieved through the leadership and co-ordination of CBC's Mission Committee.

Investment

Financial Support – Through the regular giving of God's people at CBC, as stewarded by the elders, care will be given to both ongoing and special financial needs of the missionaries we send and ministries we partner with.

Intercession

Prayer – We will keep the missionaries we send and the ministries with whom we partner before the congregation for prayer.

This can include:

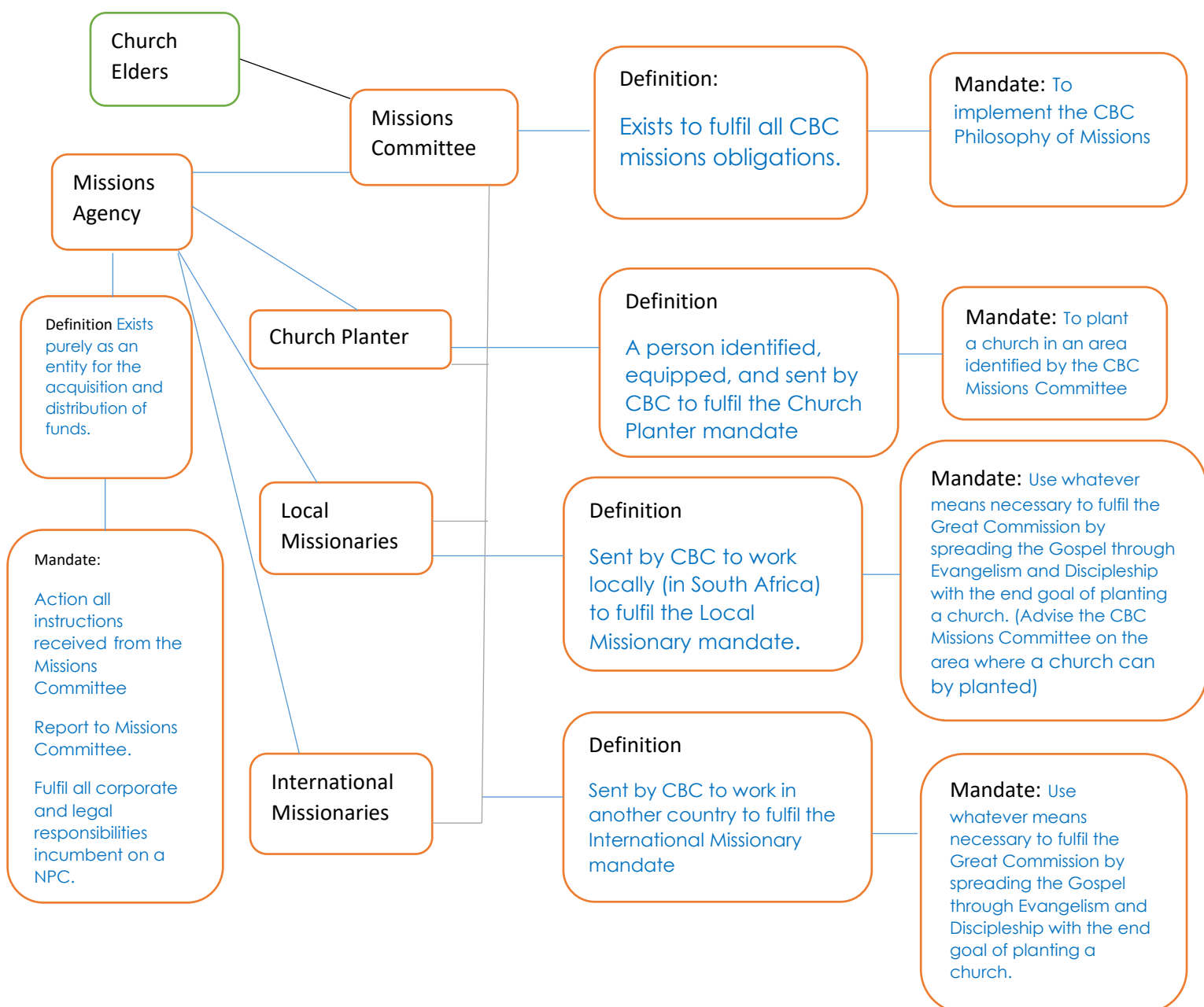
- Prayer, public and corporate, for missionaries during morning and/or evening Services.
- Ongoing inclusion in the prayer calendar/website prayer needs etc.
- Keeping the congregation aware of specific prayer requests the missionaries may have.
- Praying regularly for God to raise up more missionaries from among the body at CBC.

Involvement

Encouragement – We will seek to encourage our missionaries by:

- Maintaining open communication with them (through e-mail, letter, phone, social media) regarding the joys, struggles, and opportunities of their ministries.
- Engaging church members to send gifts or notes of encouragement to missionaries.
- Sending an elder, deacon or CBC member, as may be appropriate, to minister to them and better understand the nature of their ministry.
- Sending a CBC elder for the purpose of preaching, teaching, training, and strengthening as opportunities arise to meet specific ministry needs of the missionaries.
- Receiving regular reports from missionaries and, when available, visits to CBC for the encouragement of both the missionary and the congregation.
- Raising short-term teams for missionaries and ministries with whom we partner.
- Providing support for CBC members who desire to participate in short-term teams.
- Identifying, training and equipping those from CBC who believe they are called to long-term missions.
- Providing resources on missions, by strategically providing excellent books, DVDs, sermons, and other resources to the congregation which will encourage their understanding of, and zeal for, missions.

CBC Missions - Organogram



Christ Baptist Church Philosophy of Missions

1. Definitions

Mission is the work of God. Excluding God and perceiving mission as some type of human endeavour is, therefore, erroneous. Mission is rooted in God's desire to reconcile sinful humanity to Himself. It is creating worshippers through the preaching of the Gospel out of the efforts of local churches.

Missions is the plans of committed believers under the authority of a local church to accomplish the mission of God. Mission is the theological anchor of missions. Missions is the practical implementation of the mission of God by committed believers in a local church. Missions without mission is empty.

A good definition of missions (or the mission of the church) is stated by Kevin De Young:

The mission of the church is to go into the world and make disciples by declaring the Gospel of Jesus Christ in the power of the Holy Spirit and gathering these disciples into churches, that they might worship the Lord and obey His commands now and into eternity to the glory of God the Father.

In order to arrive at a Biblically centred Philosophy of Missions, we must first understand how missions fits into the **priority of God** and the **purpose of the church**. After this is done, then the Philosophy of Missions must define the **plans of CBC** in accomplishing missions.

2. The Priority of God

Scripture describes and affirms **worship as the ultimate priority for God's people**. The Psalmist says, "Ascribe to the LORD the glory due to His name; worship the LORD in the splendour of His holiness." (Ps. 29:2—NASB). In addition, in Matt. 4:10 Jesus told Satan, "You shall worship the LORD your God, and serve Him only." And finally, when sharing God's truth with the woman at the well in John 4, Jesus told this woman that there is a time coming when true worshipers will worship the Father in Spirit and in truth because the Father seeks those people to be His worshipers.

In another book, "Let the Nations be Glad", John Piper emphasises that **worship is the ultimate goal of the church and worship remains forever**. But missions is a temporary necessity, the means which originates from God, to bring the nations into the white-hot enjoyment of God's glory.

Missions is not the ultimate goal of the church. Worship is. Missions exists because worship doesn't. Worship is ultimate, not missions, because God is ultimate, not man....Worship, therefore, is the fuel and goal of missions....Missions begins and ends in worship....When the flame of worship burns with the heat of

God's true worth, the light of missions will shine to the remote peoples on earth....Where passion for God is weak, zeal for missions will be weak.¹

So the ultimate priority of God for His people is worship. We are to worship with all of our strength and all of our being. And we are also called to seek more worshipers to the glory of God.

3. The Purpose Statement of CBC

The purpose statement of CBC is as follows:

Together we exist as a Biblical community to glorify God: by exalting His supremacy in all things, by equipping one another for works of service, by evangelising all nations, so that we may present all people complete in Christ.

This statement encompasses the priority of God in three areas:

- Exalting His supremacy in our corporate worship and gathering
- Equipping one another for works of service
- Evangelising all nations

Worship is the priority in each of these areas. As CBC increases its desire and focus on worship and creating worshippers, the ultimate goal of “presenting all people complete in Christ” becomes fulfilled.

1. Church Planting

The primary message in the book of Acts is the growth of the Universal Church of Jesus Christ. Churches were planted in Jerusalem, Galatia, Ephesus, Corinth, Thessalonica, and more. Since this is the primary effort in the Biblical model for missions, and CBC has a solid teaching ministry, it is our Biblical conviction that we must put Church Planting as our chief priority in missions.

2. Missionaries

A second priority for CBC missions is the ministry of missionaries. A missionary is someone sent out by a local church to teach the Scriptures and to be involved in planting or strengthening a local church in a foreign context. Missionaries are sent out to live in a foreign context and to live amongst the people, speak their language, and to work towards establishing strong biblical churches in that community.

4. The Methodology for CBC Missions Priorities

With the CBC priorities firmly established (church planting and establish CBC missionaries) we now need to briefly outline how those plans will be accomplished.

1. **Church Planting**

Church planting is no small task. Firstly, it requires an abundance of prayer and involvement by the entire congregation. A church plant involves two main essential ingredients: a called man who is trained to pastor and preach, and a people group in a location distant from CBC that needs to hear the Gospel. Finding those two essentials requires leading from God's Holy Spirit and this leading comes through prayer.

Since every local church belongs to God, it must have the same biblical aim and focus, and pursue faithfulness to all that Christ commands, in whatever cultural context it exists.

In addition to the resources listed above (pastor, location), church planting requires the full involvement of CBC members. The church must be fully aware from the beginning of the plan and be involved by constant prayer, financial support, and encouragement. In some cases, current CBC members can be involved in moving to the new church plant along with the pastor.

To help lead this endeavour, CBC has a Missions Committee made up of church members and led by 1-2 elders. This committee will pray, discuss, and develop recommendations for the church.

The CBC Missions Committee must develop a Church Planting Policy which will define the steps needed to efficiently and wisely plant a church. It should include the process for defining a location, selecting a qualified man, identify potential families who could support the work by attending the new church (if possible), and the budget needed from the church to initiate and support the work. The Policy must also indicate the proper Memorandums of Understanding (MOU) between the church plant and CBC.

Christ Seminary (CS) will provide input on CS graduate availability to help the CBC Missions Committee in their selection process. In addition, CBC Leadership will also work with the men in the church relative to giftedness, spiritual maturity, and readiness for planting a church. CBC must look first to its own congregation for potential effective church planters.

The goal of a church plant is for that church to be:

- Self-supporting (finance)
- Self-governing (leadership)
- Self-propagating (missions)

2. **Missionaries**

Missionaries are people (men and women) sent out by CBC or sent by another like-minded local church in partnership with CBC who go to live in a foreign context to plant a local church or serve the local church in various capacities. These missionaries must learn the language and customs of the people to whom they are ministering and must strive to be proficient in teaching the Scriptures and making disciples in the vernacular.

The CBC Missions Committee will have oversight over all CBC missionaries serving in a foreign context. This includes keeping up with reports (newsletters), coordinating furlough visits to CBC, shepherding through phone conversations and email, communicating needs to CBC Leadership and the congregation, and insuring that CBC support is reaching the missionary.

5. Other Helpful Missions Ministries

In addition to these two priorities of CBC for Missions, there are some other areas where our people can be involved in CBC Missions.

- **CBC Short Term Mission Teams (STM)**—From time to time it is helpful to involve the CBC congregation in a STM trip. An STM can be helpful to our church plants, as well as our foreign missionaries. An STM from CBC will help our congregation get a better awareness of Missions, as well as grow in spiritual maturity and service. While STM's are not a specific priority of CBC Missions, they are a valuable tool to use in growing our people and assisting the Missions priorities of CBC.
- **Translation**—Many people who attend our local churches in RSA and Mozambique primarily speak a language different than English. At times, CBC might be able to provide written material (for discipleship, teaching, or Bible Study) for these people/churches in the vernacular.
- **Other Special Ministries**—While CBC has a specific and defined set of priorities for devoting its time and resources, there can be occasions where special Missions ministries might arise from some of its church members, or from external sources. This could include partnering with an STM from another church to accomplish a purpose for CBC Missions. In every case, the CBC Missions Committee will evaluate the special ministry opportunity and provide a recommendation to CBC Leadership for action or support.
- **Missions Organisations**—Generally, most missionaries are supported by a variety of churches and the missionary is under the authority and guidance of a Missions Organisation. Organisations like BMW, ABWE, and many others represent this service. CBC realizes that at times its foreign missionaries will be working through one of these organisations, and that CBC will have to approve them as a sending organisation.

CBC Missions Policies & Procedures

A. Roles and Responsibilities

Given that it is the privilege and responsibility of the church to carry out the work of missions, we must do so in a manner that accords with our biblical mandate and is consistent with our leadership structure. In keeping with our polity as expressed in this Philosophy of Missions and Missions Policy as well as in line with the Constitution of CBC and Statement of Faith we submit the following roles and responsibilities:

1) Elders

- The elders will have oversight of CBC's Missions partnerships and endeavours.
- The elders are to ensure that all missionary efforts are consistent with CBC's Philosophy of Missions and Policy.
- The elders have appointed a CBC Missions Committee to facilitate the administration of all the mission efforts at CBC.

2) CBC Missions Committee

The CBC Missions Committee would serve by facilitating the following:

- Administration of the finances together with the Finance Committee.
- Communication with the elders, missionary partners and the congregation.
- Promotion of missions in the life of CBC.
- Development and leadership of a team of CBC members as necessary to carry out these responsibilities.

3) Congregation

- Participating in the consideration and affirmation process of all missionary partnerships.
- Partnering with the missionaries through prayer, faithful financial support, and various other ways (e.g., personal contact, short-term trips, etc.).
- Participating in and supporting CBC mission endeavours.

B. Establishing, Evaluating, and Maintaining Missionary Partnerships

1) Elders

The Missions Committee will have the responsibility to oversee the evaluation (as described below), of each missionary partnership request, and determine which potential partnerships will be brought to CBC Leadership for further evaluation and affirmation.

2) Evaluation – *Criteria for Missionary Selection/Church Planter*

Given the biblical priorities of the proclamation of the Gospel and the teaching of the Word of God with the goal of establishing local churches, the selection of those with whom we send or partner with in missions, is crucial. Therefore, we have established the following criteria for the selection of those with whom we have the privilege of sending or partnering.

- The missionary and ministry with which he/she is involved must have a clearly defined objective, consistent with this Philosophy of Missions and our ministry priorities, and must affirm the form of doctrine as expressed in the CBC Statement of Faith.
- Since we believe that those we support must be biblically qualified for leadership in character and doctrine, each missionary must demonstrate godly character and competence to fulfil his/her ministry which has been affirmed by their local church and/or the elders of CBC.

3) Congregational Affirmation

Desiring the whole congregation to be involved in our ministry partnerships, the elders will keep the congregation informed of potential partnerships being considered. Once a missionary or ministry has been evaluated by the elders as outlined above, and the elders desire to pursue a partnership, the missionary or ministry shall be submitted before the church members for further evaluation, questions and/or clarifications regarding their ministry. A period of 2-4 weeks will be given for congregational input and affirmation before a final decision is made by the elders regarding a potential missionary partnership.

4) Missionary/Ministry Partnerships Outside of CBC

Any individual missionary or ministry outside of CBC seeking partnership/support from CBC should send a request for the same to the CBC Elders or Missions Committee. Upon review, the Elders may set up a time to interview the applicant. The Elders will then make a prayerful determination if the partnership/support process is to move forward.

5) Missionary/Ministry Partnerships Contact and Accountability

The Elders, with the involvement of the CBC Missions Committee and CBC members, will maintain ongoing contact with the missionaries and ministries with whom we partner. Mutual communication on a regular basis must be maintained for the accountability and encouragement necessary for an effective partnership.

6) Missionary / Ministry Partnerships Re-evaluation

While it is the desire of CBC to enter into and maintain a long-term relationship with our missionary partners, any significant changes to doctrinal positions, personal or ministry status, and/or type of service for which CBC originally undertook the partnership will require re-evaluation.

C. Recruitment, Training, and Sending of Missionaries from CBC

In the regular life, worship, and witness of the body at CBC, God may be pleased to raise up those He is calling to serve as missionaries. Indeed, we pray and hope this will occur with increasing frequency (Luke 10:2)!

As any given Member of CBC desires to serve God in this way, the Elders, in conjunction with the whole church body, will prayerfully work with the individual in equipping, assessing, and sending them – as the Lord directs. Likewise, the Elders and congregation will provide ongoing support, encouragement, and accountability for missionaries that have been sent from CBC.

This is the pattern we see demonstrated in Acts chapters 13 and 14, as it was in the context of a local church that missionaries were identified, trained, affirmed, sent, encouraged, supported, and held accountable. All of this focused on the missionary's work of proclaiming the Gospel, making disciples, and planting/strengthening churches.

D. Financial Considerations and Policy

1) Purpose

The purpose of this financial policy is to serve as a guideline for decision-making regarding the distribution of funds and other resources entrusted to CBC.

2) General Provisions for Missionaries and Mission Endeavours that CBC supports and partners with:

At the determination of the Elders, monies from the CBC Missions Fund will be designated for the financial support of those missionaries and missions endeavours with whom we have decided. The allocation of the funds will be considered in light of the established support guidelines.

The Elders will annually review the distribution of finances to our partnering missionaries and mission endeavours and provide regular reports to the congregation.

3) Financial Support for Short-Term Mission (STM)Activities:

The Missions Committee will work with the Elders to outline specific considerations, but the general framework is given below:

At times the missionaries/ministries we support may request help in the form of a STM. Requested help may include areas such as preaching, teaching, training, evangelism, and various special projects. All requests will be considered through the Missions Committee, in connection with the Elders. Care will be given to ensure that the tasks and goals of a short-term team will be consistent with our Philosophy of Missions.

Financial support for STM's will usually come from the following:

- Church's general fund.
- Church's Missions fund
- Funds from the solicitation of church members and others outside CBC
- The individual's personal funds.

4) Special Financial Support for Foreign Missionaries:

On special occasions, CBC might consider supporting their foreign missionaries in the form of honorariums (for example, preaching or teaching at a conference) and travel. These will be recommended and determined by the CBC Missions Committee and CBC Leadership, and as funds are available.

So What do We Need To Do?

To accomplish this task, CBC needs to build a strong Missions Committee primarily made up of spiritually mature church members and a few church leaders. This Missions Committee will begin to create and implement a CBC strategy to accomplish its Missions vision. Before any Missions activity can happen, there needs to be a group of people assigned to form a Missions Committee. The Missions Committee should mostly be comprised of mature church members along with 1-2 representatives from CBC Leadership. The CBC elders will create a process for building this Missions Committee. The Missions Committee will be responsible for carrying out the Missions vision of CBC as determined by CBC Leadership.

The CBC Missions Committee must develop a Church Planting Policy which will define the steps needed to efficiently and wisely plant a church. It should include the process for defining a location, selecting a qualified man, identify potential families who could support the work by attending the new church (if possible), and the budget needed from the church to initiate and support the work. The Policy must also indicate the proper Memorandums of Understanding (MOU) between the church plant and CBC.

Implications – Our Role in Missions as CBC

The Local Church Must Pray for Missionaries – Supplication

- ***Pray for the supply of missionaries*** – This is exactly what Jesus taught his disciples in Matt. 9:37-38, *“The harvest truly is plentiful, but the laborers are few. Therefore pray the Lord of the harvest to send out laborers into His harvest.”* This can be summarised as follows; *“The goal of our prayer is very specific, “to send out workers into His harvest.” In light of the size of the harvest and shortage of workers, the disciples of Jesus Christ must do something, but contrary to our natural impulse (to work harder), Jesus commands us to pray for more workers. If we are serious about the harvest, we will earnestly beg for God to supply more missionaries to work in it.”* This certainly includes those who will travel over our borders and further abroad as well as labourers for the local church itself, for we are living on the mission field.
- ***Pray for the success (spread) of the missionary message*** – This is consistent with the apostle Paul’s own request for prayer concerning the effectiveness of his own gospel ministry in 2 Thessalonians 3:1, *“Finally, brethren, pray for us that the word of the Lord will spread rapidly and be glorified, just as it did also with you”.* We may ask why then do we not see more people saved as a result of Gospel preaching? This can be seen to have been caused by our lack of faith and our lack of prayer rather than a deficiency in the power of God or his Word.
- ***Pray for the safety (protection and deliverance) of missionaries*** – In the very next verse of 2 Thessalonians 3, Paul continues, *“and that we will be rescued from perverse and evil men; for not all have faith.”* For whatever reason, God has chosen to use prayer as the means by which he protects and delivers his servants from harm. *God wants us to pray for those who serve Him on the front lines of the gospel because they are engaging in spiritual warfare and they have very real enemies that oppose them.*

The Local Church Must Send out Missionaries – Sending

Acts 13:1-4 teaches several important things about sending out missionaries. First of all, it is clear from v2 that God Himself is the primary sending agent, because the Holy Spirit said, *“Now separate to Me Barnabas and Saul for the work to which I have called them.”* But it is also important to note that it was the local church in Antioch which confirmed this call and consecrated these men and sent them out (mediating agent) to serve as missionaries. In verse 3 it says, *“Then, having fasted and prayed, and laid hands on them, they sent them away.”* God is the ultimate sending agency, working through the local church. This is consistent with the local church’s focus in this age. The local church is both the target and the agent of the Great Commission!

The Local Church Must Supervise Missionaries – Supervision

This principle becomes evident when one looks at the return of Barnabas and Paul to Antioch in Acts 14. In verse 27 it says, *“Now when they had come and gathered the church together, they reported all that God had done with them.”* Not only did the local church commission them in obedience to the Holy Spirit’s call, but they also held them accountable by gathering together to hear all that God had done in their ministry.

The Local Church Must Support Missionaries – Support

3 John 6 the apostle says of the church’s support for missionaries, *“You will do well to send them on their way in a manner worthy of God.”* Their support is to be in a manner worthy of God, which means they should be treated the same way the church would treat God Himself. The reasons to support them are found in the next verse.

First, they went out for the sake of Christ’s name, not their own benefit.

Second, in order to avoid hindering the Gospel, they did not seek support from those among whom they ministered.

And finally, the goal of their support is found in verse 8 which concludes, *“so that we may be fellow workers with the truth.”* By properly supporting missionaries, the local church partners with them in the work of the ministry. We need to take our missions responsibilities seriously both as individuals and as members of the local church, that we might glorify God above all.

Approved by CBC Elders on 25 March 2022

David Beakley

Mark Melville

Charlie Rampfumedzi

Andrew Isiaho

William Vaughan

